



O W N E R ' S M A N U A L

A black and white photograph of a woman with short blonde hair, wearing a dark tank top, looking directly at the camera while sitting on a stationary bike. The bike's handlebars and frame are visible on the right side of the image. The lighting is dramatic, with strong highlights and shadows.

C Y C L E S

1.0)	IMPORTANT SAFETY INSTRUCTIONS	xx
	READ AND SAVE THESE INSTRUCTIONS	xx
1.1)	Installation Requirements	xx
1.2)	Preventative Maintenance and Cleaning Tips	xx
2.0)	USING MANAGER PREFERENCE MODE	xx
2.1)	Using C Safe	xx
2.2)	Setting Up Fit Connexion™	xx
3.0)	ADJUSTING THE SEAT HEIGHT	xx
3.1)	Upright Seat Height	xx
3.2)	Recumbent Seat Height	xx
3.3)	Recumbent Lumbar Support	xx
4.0)	USING THE CYCLE OR RECUMBENT	xx
4.1)	Console Description	xx
4.2)	Manual Operation	xx
4.3)	Operating Level Based Programs	xx
4.4)	Heart Rate Control	xx
4.5)	Constant Watts	xx
5.0)	EQUIPMENT SPECIFICATIONS	xx
5.1)	MX-R5	xx
5.2)	MX-U5	xx
6.0)	PARTS AND ASSEMBLY	xx
6.1)	MX-R5 Exploded View	xx
6.2)	Parts List	xx
6.3)	Assembly Instructions	xx
6.4)	MX-U5 Exploded View	xx
6.5)	Parts List	xx
6.6)	Assembly Instructions	xx

READ AND SAVE THESE INSTRUCTIONS

- This Cycle is intended to for commercial use
- To insure your safety and protect the equipment, read all instructions before operating the MATRIX Cycle.

When using an electrical product, basic precautions should always be followed, including the following:

DANGER To reduce the risk of electric shock:

- Always unplug this equipment from the electrical outlet immediately after using and before cleaning.

Your MATRIX Cycle is self-generating (requiring no external power source) and must be pedaled to power up the console.

WARNING To reduce the risk of burns, fire, electrical shock or injury to persons that may be associated with using this product:

- An appliance should never be left unattended when plugged in. Unplug from outlet when not in use and before putting on or taking off parts.
- This product must be used for its intended purpose described in this Owner's Guide. Do not use other attachments that are not recommended by the manufacturer. Attachments may cause injury.
- To prevent electrical shock, never drop or insert any object into any opening.
- Do not remove the side covers. Service should only be done by an authorized service technician.
- Never operate the Cycle with the air openings blocked, Keep the air openings clean, free of lint, hair and the like.
- Never operate product if it has a damaged cord or plug, if it is not working properly, if it has been damaged, or immersed in water. Return the appliance to a service center for examination and repair.
- Do not carry this appliance by supply cord or use cord as handle.
- Keep any power cord away from heated surfaces.
- Keep hands and loose clothing away from moving parts.
- Close supervision is necessary when Cycle is used by or near children, invalids, or disabled persons.
- Do not use outdoors.
- Do not operate where aerosol (spray) products are being used or where oxygen is being administered.
- To disconnect, turn all controls to the off position, then remove plug from outlet
- Connect this Cycle to a properly grounded outlet only.

CAUTION If you experience chest pain, nausea, dizziness or shortness of breath, STOP exercising immediately and consult a physician before continuing.

SETTING UP THE CYCLE

Assembly instructions have been provided with your Cycle. For your safety, please read and follow each of the steps in the assembly guide. To obtain a copy of the assembly guide, please contact MATRIX FITNESS SYSTEMS.

1.1 INSTALLATION REQUIREMENTS

Your MATRIX Cycle is designed to be self contained and does not require a power supply to operate.

Fit Connexion™ requires a 9 volt battery and a 110 volt power supply to operate the monitor. Use only the power supply provided by the manufacturer, please contact MATRIX FITNESS for a replacement.

CAUTION Use of the wrong power supply may cause damage to your Cycle and/or entertainment device.

Locate a level stable surface to position Cycle. The Cycle has four leveling feet located under the foot support. If your Cycle wobbles in the location where you intend to use it, loosen the lock nut on the adjusting foot and adjust the feet until stable. Once level, lock the adjusting feet by tightening the lock nut to the frame.

1.2 PREVENTATIVE MAINTENANCE AND CLEANING TIPS

Preventative maintenance and daily cleaning will prolong the life and look of your Matrix fitness equipment.

Please read and follow these tips.

- Position the equipment away from direct sunlight. The intense UV light can cause discoloration of plastics.
- Locate your equipment in an area with cool temperatures and low humidity.
- Clean with a soft 100% cotton cloth.
- Clean with non-ammonia based cleaners.
- Wipe seats, handles, heart rate grips, and handlebars clean after each use.
- Do not pour liquids directly onto your equipment. This can cause damage to the equipment and in some cases electrocution.
- Check pedal safety straps weekly for wear.
- Adjust leveling feet when equipment wobbles or rocks.
- Maintain a clean area around equipment free from dust and dirt.

2) USING MANAGER PREFERENCE MODE

2.0 USING MANAGER PREFERENCE MODE

Your MATRIX Cycle is designed to allow you to customize settings for your preferences and diagnostics. The Manager Preference Mode can only be accessed while the Cycle is powered up. Follow the instructions to adjust the Cycle computer for your desired settings.

STEP 1 Power up the Cycle and Hold the UP and DOWN arrow keys for 3 seconds. The word Manager will appear in the alphanumeric window and will enter into the Manager Preference Setting automatically after 3 seconds. Continue to pedal until finished.

STEP 2 Select information you would like to view or change from the following list, by using the UP or DOWN arrows. Press ENTER to select.

Manager preference mode will allow you to view and set the following.

DISPLAY	CODE: INFORMATION	USER DEFINABLE	DEFAULT VALUE	MIN.	MAX.
Manager	P0: Maximum program time	Y	95 min	5	95
	P1: Default time	Y	20 min	5	95
	P2: Default level	Y	L1	L1	L20
	P3: Default weight	Y	150 lbs	80 lbs	400 lbs
	P4: Speed	Y	Miles	Miles	KM
	P5: Machine	Y	BI	BI	RE, EL
	P6: TV IR	Y	On	On	Off
	P7: Cardio Entertainment	Y	On	On	Off
	P8: Accumulated Distance				
	P9: Accumulated Time				
	P10: Software Version				

STEP 3 Use UP or DOWN arrows to increase or decrease values.

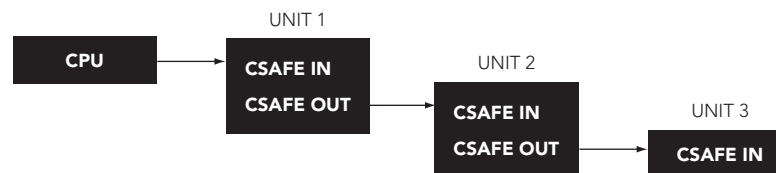
STEP 4 Press START to save and enter selected values and exit to STEP 2.

STEP 5 Exit by pressing Start. Screen will reset to Start up.

2.1 USING CSAFE s

Matrix is the leader in entertainment availability. On the back of the console are three RJ45 receptacles. They are marked CSAFE IN, CSAFE OUT, and ENTERTAINMENT.

Use the CSAFE IN to plug in any CSAFE device using the RJ45 connector CSAFE OUT allows CSAFE products to be daisy chained together from one unit to the next. The connection is as follows;



2.2 SETTING UP FIT CONNEXION™

Fit Connexion™

Your equipment is preset to offer you the maximum benefit of your desired entertainment offering. Whether it is FIT CONNEXION™ or other CSAFE entertainment packages, Matrix makes it easy to connect. Look on the back of the console and locate the receptacle labeled ENTERTAINMENT.

This port is specific for audio and visual entertainment devices. CSAFE ready products can plug in and utilize the volume, channel and headphone connector

When installing Fit Connection make sure you are using the power cord supplied with your package. Other power cords could cause malfunctions with your product.

Assemble the Fit Connection bracket by following the instructions supplied in your package. Make sure you feed the power cord and coaxial cable through the round hole at the top of the bracket. Insert the monitor and fasten with the screw provided.

Connect the coaxial cable and the power cord to the monitor.

Take the Fit Connexion™ audio cord and plug it into the audio out on the back side of the monitor. The RJ45 needs to now be plugged into the Jack labeled Entertainment. This cord provides the audio to your headphones.

At the front base of the unit you will see the Fit Connexion™ coaxial cable and power supply connectors. Connect the coaxial cable and the power supply. Turn the monitor on and see if it has power. Follow the instructions provided with your monitor to select language and input device options.**3.0**

3.0 ADJUSTING THE SEAT HEIGHT

Your MATRIX Cycle is designed for ease of use. We have incorporated seat height adjustments that are easily located and simple to adjust.

3.1 UPRIGHT SEAT HEIGHT

To adjust the seat height on the Upright Cycle, locate the red pull pin before you mount the Cycle. To lower the seat down, pull the red knob while holding the seat with the other hand and slide up or down accordingly. To adjust seat height up, simply raise the seat to desired position. Our automatic seat lock will set. Make sure you are not seated when you pull the knob or pull seat up.

3.2 RECUMBENT SEAT HEIGHT

To adjust your seat height on the Recumbent Cycle locate the red lever under the right side of the seat before you mount the Cycle. Place your right hand on the red adjustment handle under the right side of the seat. Place feet on the ground while seated and slide forward if needed. Place feet on pedals, gently lift lever under the right side of the seat. Using legs slowly push and slide the seat up or down to desired position. Release lever and allow to lock into place.

3.3 RECUMBENT LUMBAR SUPPORT

The red knob on the side of the seat is for adjusting the lumbar support. To adjust, simply turn the knob located on the back rest. Turn the knob forward to increase support and backward to decrease support until desired comfort has been achieved.

4) USING THE CYCLE OR RECUMBENT

4.1 CONSOLE DESCRIPTION



PROGRAMS Simple program view and selection buttons. Matrix Cycles feature seven programs.

START / QUICK START One touch Quick Start and Start any time during preference selection.

UP / DOWN Easy information and level selection.

ENTER / SELECT SCREEN / RESET This multi-function button enters information when setting up programming options, toggles information displayed and if held down for 5 seconds resets the Cycle to Start-up mode.

DISPLAY VIEW These three buttons allow the user to customize the way the unit's lights are displayed.

ENTERTAINMENT Control the CHANNEL and VOLUME of your attached TV or entertainment system. (Must have Fit Connexion™ or entertainment source connected)

HEAD PHONE JACK Located at the base of the console, just plug in a headset and use the ENTERTAINMENT buttons to adjust VOLUME. (Must have Fit Connexion™ or entertainment source connected)

4.2 MANUAL OPERATION

MATRIX design makes using the programs as easy as one touch of a button.

QUICK START Start pedaling and press QUICK START to begin workout.

MANUAL MODE allows you enter desired time, level, and weight.

STEP 1 Select Manual program button on left of panel.

Press Enter or wait 5 seconds.

NOTE Selecting START will start program.

STEP 2 Select Time by using the UP or DOWN arrow keys. When finished

Press Enter or wait 5 seconds.

NOTE Selecting START will start program.

STEP 3 Select Level by using UP or DOWN arrow keys. You can change the level at any time

during workout. When finished,

Press Enter or Wait 5 seconds.

NOTE Selecting START will start program.

STEP 4 Select Weight by using the UP or DOWN arrow keys.

Press START or ENTER to begin workout.

Display

TIME

Starting 3

Starting 2

Starting 1

4.2 OPERATING LEVEL BASED PROGRAMS

Your MATRIX Cycle offers versatile programs to keep the user motivated.

The following Instructions will guide you through simple steps to select INTERVALS, ROLLING, FAT BURN, and RANDOM programs.

STEP 1 Select the program button on left of panel.

Press ENTER or wait 5 seconds.

NOTE Selecting START will begin program.

STEP 2 Select Time by using the UP or DOWN arrow keys. When finished

Press ENTER or wait 5 seconds.

NOTE Selecting START will begin workout.

STEP 3 Select Level by using UP or DOWN arrow keys. You can change the level at any time

during workout. When finished,

Press ENTER or Wait 5 seconds.

NOTE Selecting START will begin workout.

STEP 4 Select Weight by using the UP or DOWN arrow keys.

Press START or ENTER to begin workout.

Display

TIME

Starting 3

Starting 2

Starting 1

4.4 HEART RATE CONTROL

For your convenience, MATRIX FITNESS CYCLES come standard with digital contact heart rate sensors and POLAR telemetry compatible.

Locate the metal sensors on the handrail of the Cycle. Notice there are two separate pieces of metal on each grip. You must be making contact on both pieces of each grip to get an accurate heart rate reading. You can grab these sensors in any program to view your current heart rate located in the lower left hand window marked Heart Rate.

Heart Rate Program

Follow these easy Steps to enter into the Heart Rate Program.

STEP 1 Select TARGET HR program button on left of panel.
Press Enter or wait 5 seconds.

NOTE Selecting START will start program.

STEP 2 Select Time by using the UP or DOWN arrow keys. When finished
Press Enter or wait 5 seconds.

NOTE Selecting START will start program.

STEP 3 Using the following chart, select Target Heart Rate by using UP or DOWN arrow keys. You can change the Target Heart Rate at any time during workout. When finished,
Press Enter or Wait 5 seconds.

NOTE Selecting START will start program.

STEP 4 Select Weight by using the UP or DOWN arrow keys.
Press START or ENTER to begin workout.

Display

TIME

Starting 3

Starting 2

Starting 1

HR CHART FPO

4.5 CONSTANT WATTS

Constant Watts program is a unique program that allows you to vary your cadence or RPM and the Cycles resistance will adjust accordingly to your selected goal. The quicker you pedal the less resistance for the goal selected.

Follow these easy Steps to enter into the Constant Watts Program.

STEP 1 Select CONSTANT WATTS program button on left of panel.
Press Enter or wait 5 seconds.

NOTE Selecting START will start program.

STEP 2 Select Time by using the UP or DOWN arrow keys. When finished
Press Enter or wait 5 seconds.

NOTE Selecting START will start program.

STEP 3 Select Constant Watts goal by using UP or DOWN arrow keys. You can change the watts target at any time during workout. When finished,
Press Enter or Wait 5 seconds.

NOTE Selecting START will start program.

STEP 4 Select Weight by using the UP or DOWN arrow keys.
Press START or ENTER to begin workout.

Display

TIME

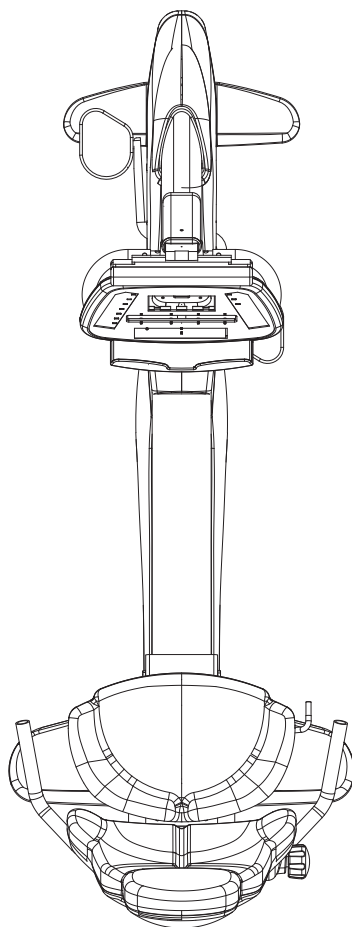
Starting 3

Starting 2

Starting 1

> recumbent cycle

MX-R5



MACHINE WEIGHT	SIZE
132 lbs	inches = 49" x 62" x 25"
60 kg	cm = 128.5 x 157.5 x 63.5

SPECIFICATIONS

Product Name	R5
Foot Print	49"H x 62"L x 25"W
Weight	132 lbs
Max User Weight	400 lbs = 181 kg
Frame Construction	Aluminum/Steel
Self Contained	Yes
Resistance Type	Generator
Resistance Levels	20

PROGRAMS

One Button Quick Start	Yes
Random (20 profiles)	Yes
Target Heart Rate	Yes
Interval	Yes
Constant Watts	Yes
Rolling	Yes
Fat Burn	Yes

HEART RATE

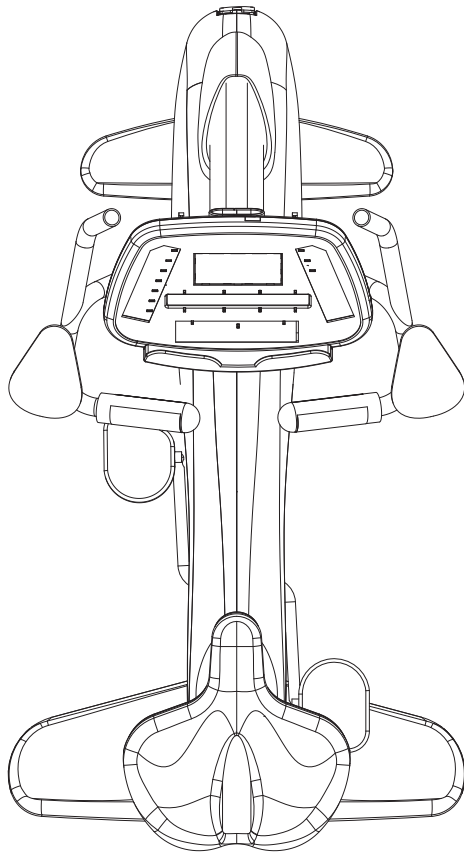
Polar Telemetry	Yes
Contact Heart Rate	Yes

ENTERTAINMENT READY

Volume Control	Yes
Channel Control	Yes
Display View Control	3 Views
Coaxial Cable Connection	Yes
Acc TV Power Connection	Yes
Monitor Mount	Yes
IR Port	Yes
Head Phone Jack	yes

> upright cycle

MX-U5



MACHINE WEIGHT	SIZE
106 lbs	inches = 57" x 44" x 63.5"
48 kg	cm = 144.8 x 111.8 x 25

SPECIFICATIONS

Product Name	U5
Foot Print	57"H x 44"L x 25"W
Weight	106 lbs
Max User Weight	400 lbs = 181 kg
Frame Construction	Aluminum/Steel
Self Contained	Yes
Resistance Type	Generator
Resistance Levels	20

PROGRAMS

One Button Quick Start	Yes
Random (20 profiles)	Yes
Target Heart Rate	Yes
Interval	Yes
Constant Watts	Yes
Rolling	Yes
Fat Burn	Yes

HEART RATE

Polar Telemetry	Yes
Contact Heart Rate	Yes

ENTERTAINMENT READY

Volume Control	Yes
Channel Control	Yes
Display View Control	3 Views
Coaxial Cable Connection	Yes
Acc TV Power Connection	Yes
Monitor Mount	Yes
IR Port	Yes
Head Phone Jack	Yes

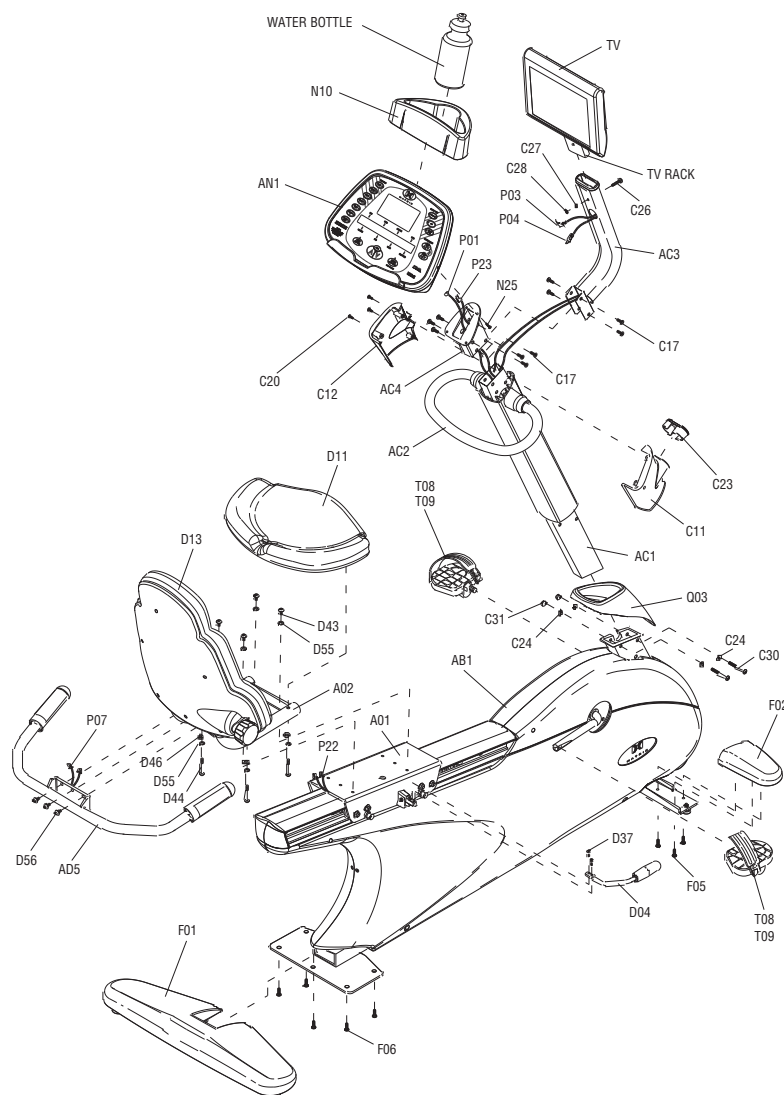
> cycles

MX-R5 and MX-U5



>recumbent cycle

MX-R5



FASTENERS AND ASSEMBLY TOOLS

REFERENCE	SKETCH	DESCRIPTION	QUANTITY
C17		BUTTON HEAD BOLT (M8 x 15L)	6
C20		BUTTON HEAD BOLT (M4 x 10L)	3
C24		WASHER (8.2x18.0x1.4t(BED)	2
C30		BUTTON HEAD BOLT (M8 x 50L)	2
D37		BUTTON HEAD BOLT (M8 x 25L)	2
D39		WASHER (SW5 5.1x9.3x1.3t)	2
D43		BUTTON HEAD BOLT (M8 x 15L)	4
D56		BUTTON HEAD BOLT (M8 x 15L)	3
D44		BUTTON HEAD BOLT (M8 x 50L)	4
C31		SCREW (M8)	2
D46		WASHER (8.2x18.0x1.5t)	4
F05		BUTTON HEAD BOLT (M8 x 20L)	6
F06		BUTTON HEAD BOLT (M10 x 20L)	5
N25		BUTTON HEAD BOLT (M5 x 12L)	4
C26		BUTTON HEAD BOLT (M4 x 38L)	1
C27		WASHER	1
C28		SCREW (M4)	1
		OPEN WRENCH (#13)	1
		OPEN WRENCH (#17)	1
		PHILLIPS DRIVER (4.5 x 50mm)	1
		5mm ALLEN WRENCH	1
		4mm ALLEN WRENCH	1
		5mm ALLEN WRENCH	1
		6mm ALLEN WRENCH	1

>recumbent cycle

MX-R5

NO.	DESCRIPTION	SPECIFICATION
AG1	Hand Pulse Grip Set	RB50 (w/HP) w/Texture
AN1	Console Set	RB50 (English-Metric)
AN2	Hand Pulse Grip Set	CB32 (w/Texture)
AN2	Hand Pulse Grip Set	CB32 (w/o Texture)
AU1	Tension Wheel Set	RB50
D13	Back Pad Set	RB50
D23	Seat Roller Set	RB50
D25	Adjustable Roller Set	RB50
Q01	Right Side Cover Set	RB50
Q02	Left Side Cover Set	RB50
R01	Drive Axle Set	RB50
R04	Slide Bearing Housing Set	CB32
R05	Fixing Bearing Housing Set	CB32
T01	Pedal Axle Set	CB32
AB1	Frame Set	RB50 (Metal Color)
AC1	Console Mast Set	RB50 (Metal Color)
AC2	Front Handlebar Set	PVC
AC3	TV Bracket (with Cables)	MATRIX R5(RB50)
AC4	Console Fixed Plate	
AD1	Slide Seat Set	RB50 (Metal Color)
AD2	Back Pad Mast Set	RB50 (Metal Color)
AD6	Back Pad with Lumbar Set	
AZ1	Hardware Kit	Include Hand Tools (Purple Round Sticker)
C01	Console Mast	
C10	Front Handlebar Axle	SS41
C11	Console Lower Cover-RH	ABS (Knurled on Surface)
C12	Console Lower Cover-LH	ABS
C13	Spacer	20x26x15L
C14	Console Mast Sleeve	Nylon
C17	Screw, Inner Hex Socket	M8x1.25Px15L
C18	Rivet (Brass Inserts Nut)	ALS7-8125-3.8 (0.5-3.8)
C19	Screw, Oval Hex Socket	M8x1.25Px20L
C20	Screw, Round Tapping	4x10L
C21	Fixed Nut	AN04 (M20x1.0Px6t) (Bed)
C22	Front Handlebar Cover	PVC
C23	Console Cover	Nylon
C24	Flat Washer	8.2x_18x1.4t (Bed)
C25	Screw, Oval Hex Socket	M8x1.25Px15L
C30	Screw, Round Hex Socket	M8x1.25Px50L (30L)
C31	Nylon Nut	M8x1.25P (Bed)
C32	2-E.ND Round Key	6x6x16L
D04	Adjust Lever	SS41
D11	Seat Pad	

NO.	DESCRIPTION	SPECIFICATION
D12	Seat Pad Fixed Plate	SPC (Zinc Plating)
D18	U Sleeve	
D21	Knob	Nylon + Fiber (Red #1797)
D23	Roller	POM
D24	Roller Axle	SS41
D25	Adjustable Roller	POM
D26	Adjustable Roller Axle	SS41
D29	Adjustable Positioning Board	SPC
D30	Located Block	S45C
D31	Adjustable Spring	
D32	Handlebar	Long Pearl #4 (Red)
D33	Nylon Nut	M6x1.0P (Bed)
D34	Nylon Nut	M8x1.25P (Bed)
D35	C Clip-External	S-10
D36	Settle Bolt	M12x1.75Px12.0L
D37	Screw, Round Hex Socket	M5x0.8Px25L
D38	Screw, Round Hex Socket	M6x1.0Px30L(15L)
D39	Screw, Plain Head	M5x0.8Px10L
D40	Screw, Round Tapping	M5x0.8Px12L
D41	Spiral Shells Axle Cover	ABS
D43	Screw, Inner Hex Socket	M8x1.25Px15L (Bed)
D44	Screw, Oval Hex Socket	M8x1.25Px50L
D46	Arc Washer	8.2x18x.15t
D48	Screw, Round Tapping	3x12L
D51	Front Fixed Board for Cable	SPC
D52	Steel Cable Fixed Bracket	SPC
D53	Foam Grip	25.0x31.0x240L
D54	Foam Grip	PVC Sleeve (Red #1797)
D55	Spring Washer	SW8 8.0x17.0x1.5t
D56	Screw, Shallow Hex Socket	M8x1.25Px15L (Bed)
D57	End Cap	PVC Black
F01	Rear Stabilizer Set	CB32
F02	Front Stabilizer-RH Set	CB32
F03	Front Stabilizer-LH Set	CB32
F04	Adjustable Foot Pad	No Turn
F05	Screw, Oval Hex Socket	M8x1.25Px20L (Bed)
F06	Screw, Oval Hex Socket	M10x1.5Px20L
H01	Slide Rail	AL
H02	Rail Fixed Plate	SPC
H03	Screw, Round Tapping	3x10L
H04	Rail End Cap	ABS
H05	Stop Wheel Shaft	SS41(Zinc Plating)
H06	Seat Pad Stopper Roller	PU

>recumbent cycle

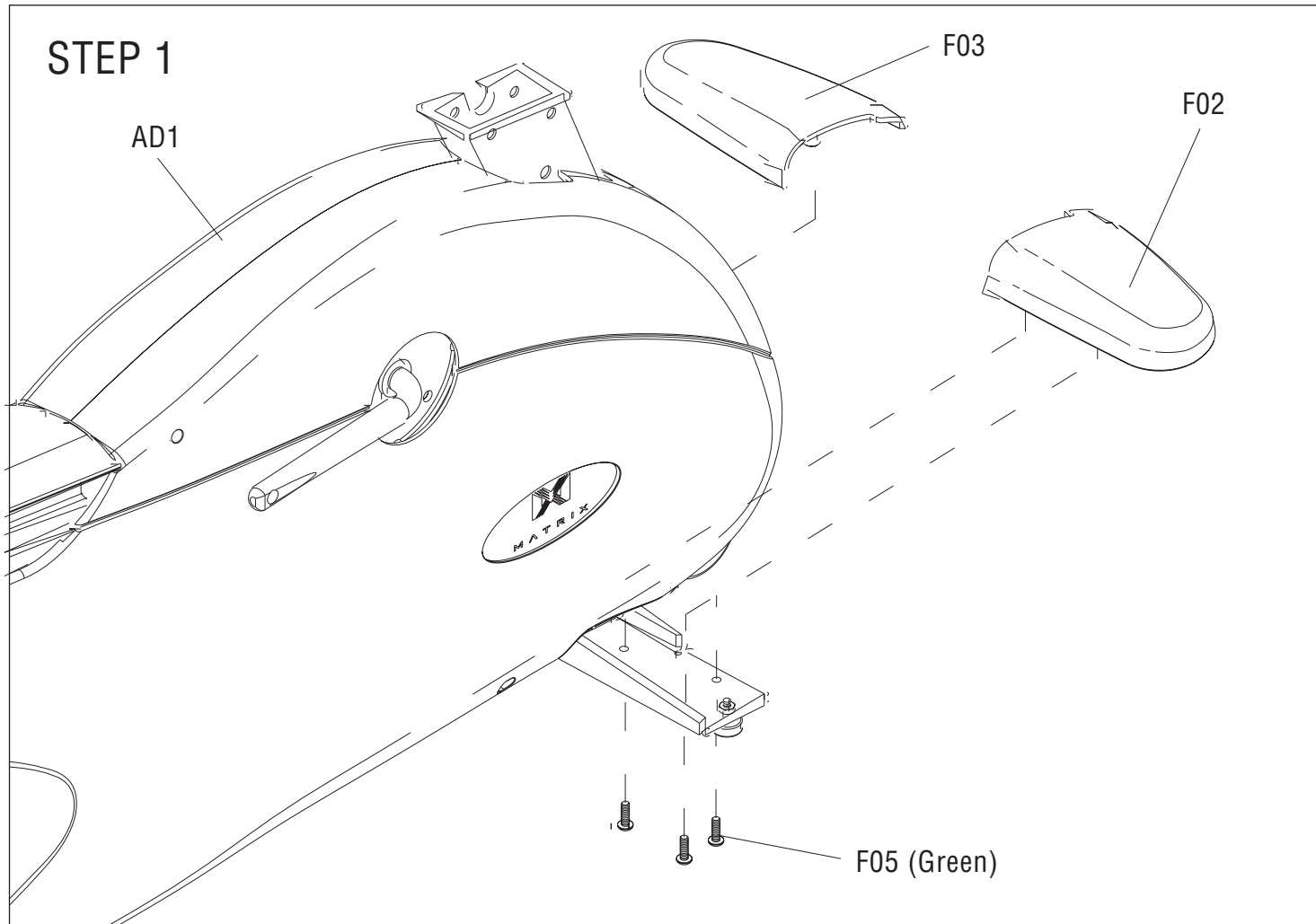
MX-R5

NO.	DESCRIPTION	SPECIFICATION
H07	Flat Washer	_5x_16x1.0t
H08	Screw, Oval Head	M4x0.7Px10L
H09	Screw, Oval Hex Socket	M8x1.25Px50L(18L)
H11	Bolt	M5x0.8Px10L
H12	Flat Washer	_6.5x_13x1.5t
H13	Hexagon Socket Headless Set Screws	M5x0.8Px15L
L01	Mobile Wheel	NYLON+30%FIBER
L02	Screw, Oval Hex Socket	M8x1.25Px70L(12L)
L03	Flat WasherL	8.2X16x1.0t
L04	Nylon Nut	M8x1.25P
N10	Water Bottle Holder	ABS
N15	Overlay	MX U5/R5/E5 (Holland)
N15	Overlay	MX U5/R5/E5 (Germany)
N15	Overlay	MX U5/R5/E5 (Italy)
N15	Overlay	MX U5/R5/E5 (U.S.A.)
N20	2-in-1 Polar Receiver	POLAR 39021539.00 (RB59-P12A)
N21	Sensor Grip	CB32-N21F
N22	Heartbeat Sensor Plate	101.5x32 (SUS304) (w/ Texture)
N22	Heartbeat Sensor Plate	101.5x32 (SUS304) (w/o Texture)
N23	End Cap, Hand Pulse Grip	Nylon
N26	Screw, Round Tapping	M3x0.5Px35L
N27	Hex Nut	M3x0.5P
P01	Console Cable	1300(XAP-07V-1+H6657P-2+SMR-08V-B)
P05	Connecting Cable of Controller	750(3.96-5P VH WHITE+HL20P-03)
P06	Power Resistance	400W10_-200(3.96-4P WHITE VH)
P07	Hand Pulse Cable	700 (H6657R1-2+110* F END*2)
P10	CONSOLE MAST CABLE	800(SMP-08V-BC+H6657P1-8)
P12	TV Power Cable	1250 (XAP-02V-1+SMR-02V-B)
P13	TV Power Cable	1250 (RG-6)X2
P18	Ferrite Cord	FH0900B-2
P19	Power Transferred Cable	1000 (XAP-02V-1+H6657R1-2)
P20	E-Port Control Board	w/PCB Board-DC Bracket & Adapter
P22	Heartbeat Sensor Rail Connecting Cable	1360 (H6657P-2)X4
P23	Connecting Cable for Console Heart Rate	800 (H6657R1-2)X4
P26	Earphone Extended Cable	185 (3.5 3-D Earphones+ Microphone F*Base 3P)
Q03	Console Mast Cover	PVC
Q05	Crank Cover	PVC (Anthracite)
Q06	Screw, Oval Tapping	_4x12L
Q07	C-Clip	WUSN-5030
R15	Screw, Round Hex Socket	M5x0.8Px10L (Bed)
R16	Flat Washer	_5.2x_13x1.5t
R17	Screw, Oval Hex Socket	M6x1.0Px12L

NO.	DESCRIPTION	SPECIFICATION
R18	Flat Washer	_6.2x_20x2.0t (HRC47-52)
R19	Ploy V Belt	500-J6 (Carlisle)
R20	Ploy V Belt	440-J8 (Carlisle)
S01	Generator (CB32-KT/RB50-KT)TW Line	_190 CE CB/RB MX/600 Series
S01	Generator (JM07-AM1A)USA Line	_190 NO CE MX/600 Series (JM07-AMIA)
S02	Eye Hook Screw	1/4"-20UNCx70L Eye Hole 10
S03	Flat Washer	_10.2x_15x1.5t
S04	Nut, Hex Head	3/8"-26UNF
S05	Hook Cover for Eye Bolt	1.6t SPC (Bed)(CB32-S05D)
S06	Nylon Nut	1/4"-20UNC (Bed)
S07	Flat Washer	_1/4"x_15x1t
S08	Control Board (JE07002)	U5-R5-E5-H002 (JE07002)
S09	Hex Nut	3/8"-26UNCx4H
S11	Flat Washer	_5.3x_10x1.0t
S12	Screw, Round Hex Socket	M5x0.8Px12L
S14	Screw, Round Tapping	M5x0.8Px8L
T07	Ball Bearing	6205ZZ (BR6205ZZ)
T08	Pedal & Pedal Strap	EX-13 1/2 BR-"MATRIX" logo
T09	Pedal Strap	PU (CB32-T09B)
T13	Right Crank Nut	SS41 (Zinc Plating)
T15	Front Spacer	Powder Metallurgy (CB32-T15I)
T17	Flat Washer	_32x_25.3x1.0t
T18	Spacer Tight Nut	SS41(ZINC PLATING)
T19	Large Screw, Oval Head	M4x0.7Px8L
U04	Pulling Adjustable Plate	2t SPC
U05	Ball Bearing	6206ZZ
U06	C Clip Internal	R-62
U07	Ball Bearing	6204ZZ
U08	C Clip-External	S-30
U09	C Clip-External	S-20
U11	Tension Wheel Spring	Zinc Plating SWPB
U12	Screw, Round Hex Socket	M5x0.8Px10L (Bed)
V01	Rail Decal	
V02	Decal	Matrix (Except Italy) (CB32-V04B)
X01	Carton(1) Set	
Z02	L-Key Hex Wrench	4MM
Z03	L-Key Hex Wrench	5MM
Z04	Open End Wrench	#13
Z05	Screw Driver, Cross Type	4.5*50
Z06	Open End Wrench	#15#17x325L
Z07	T Type Wrench	5mm

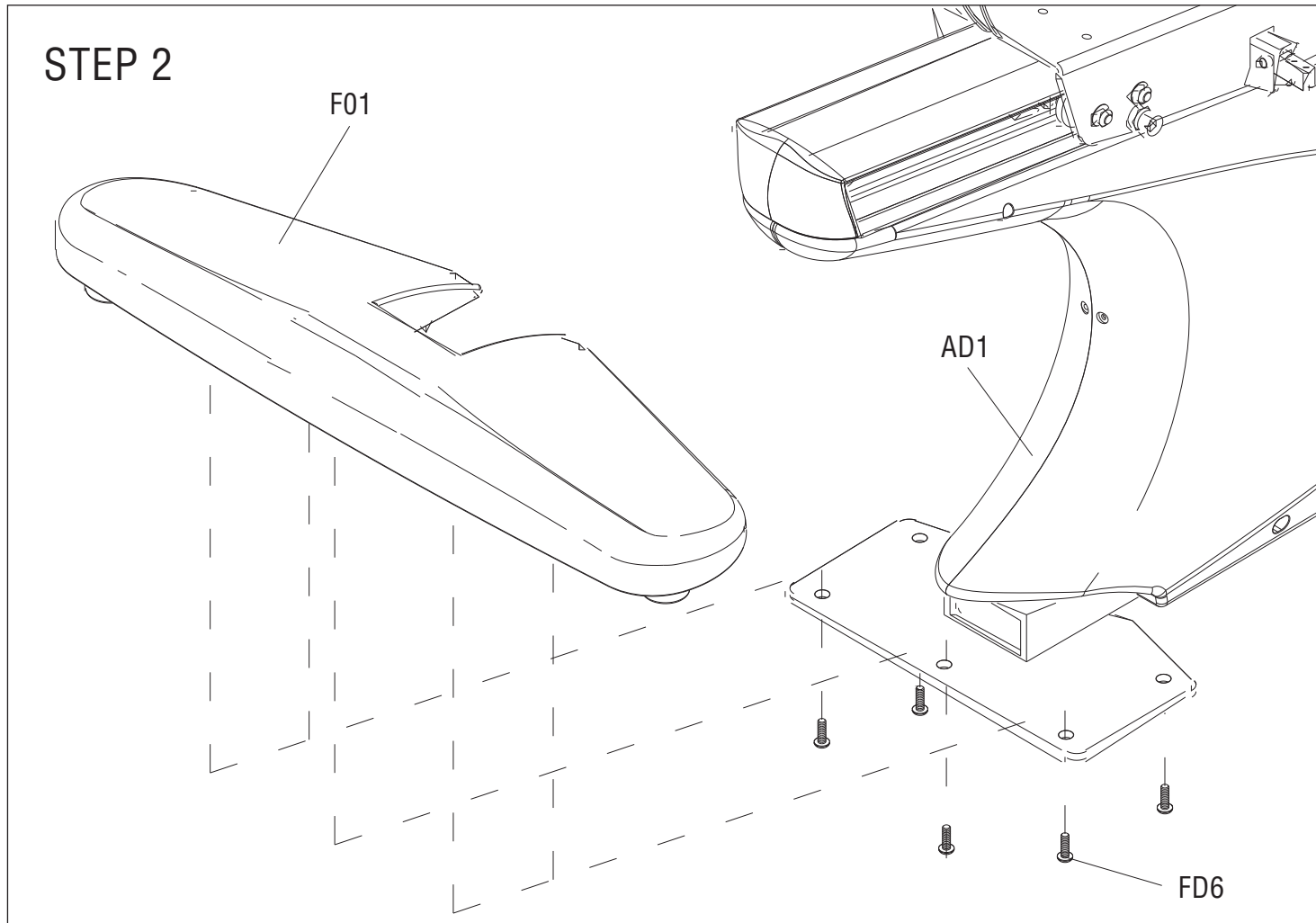
>recumbent cycle

MX-R5



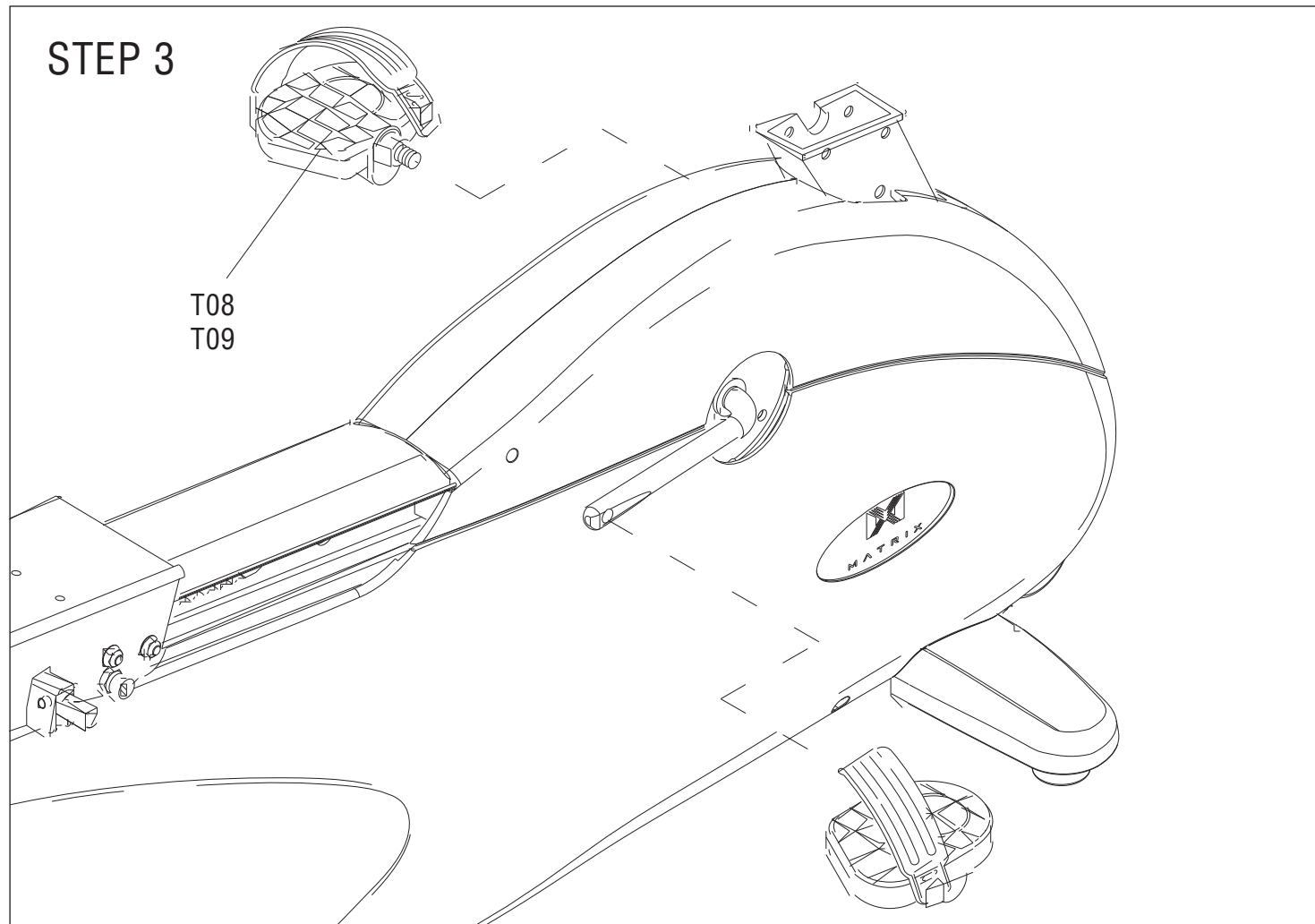
>recumbent cycle

MX-R5



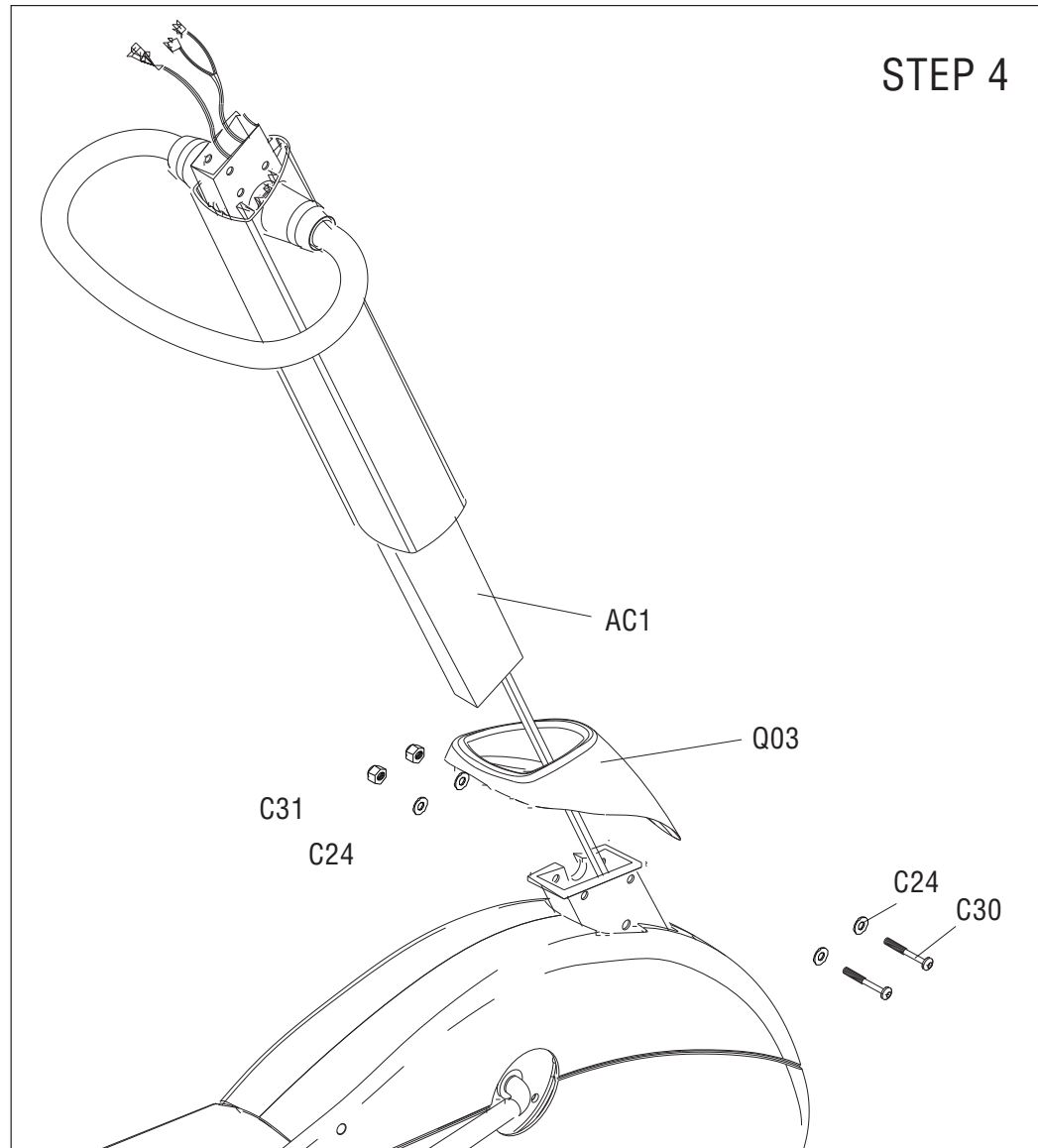
> recumbent cycle

MX-R5



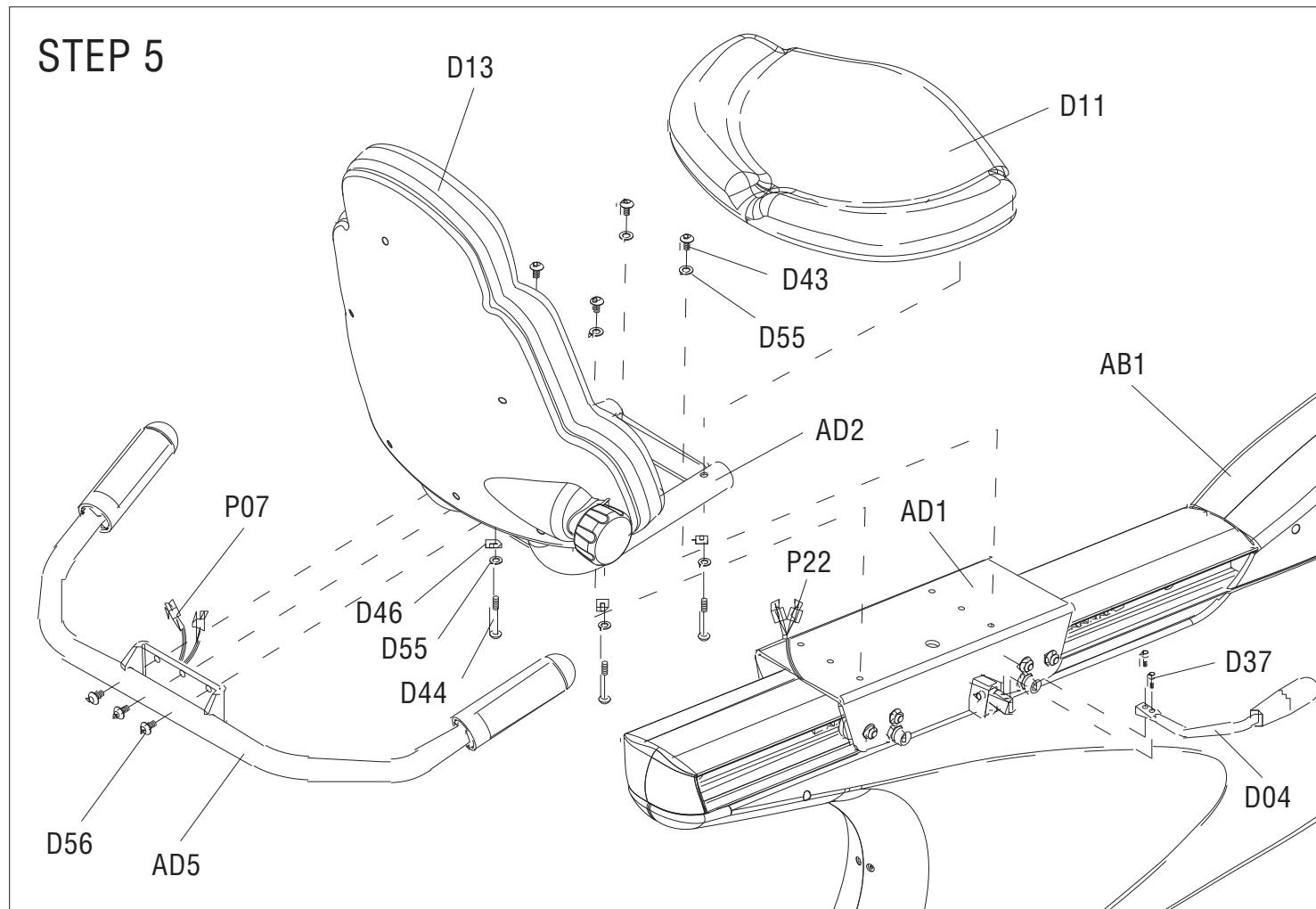
>recumbent cycle

MX-R5



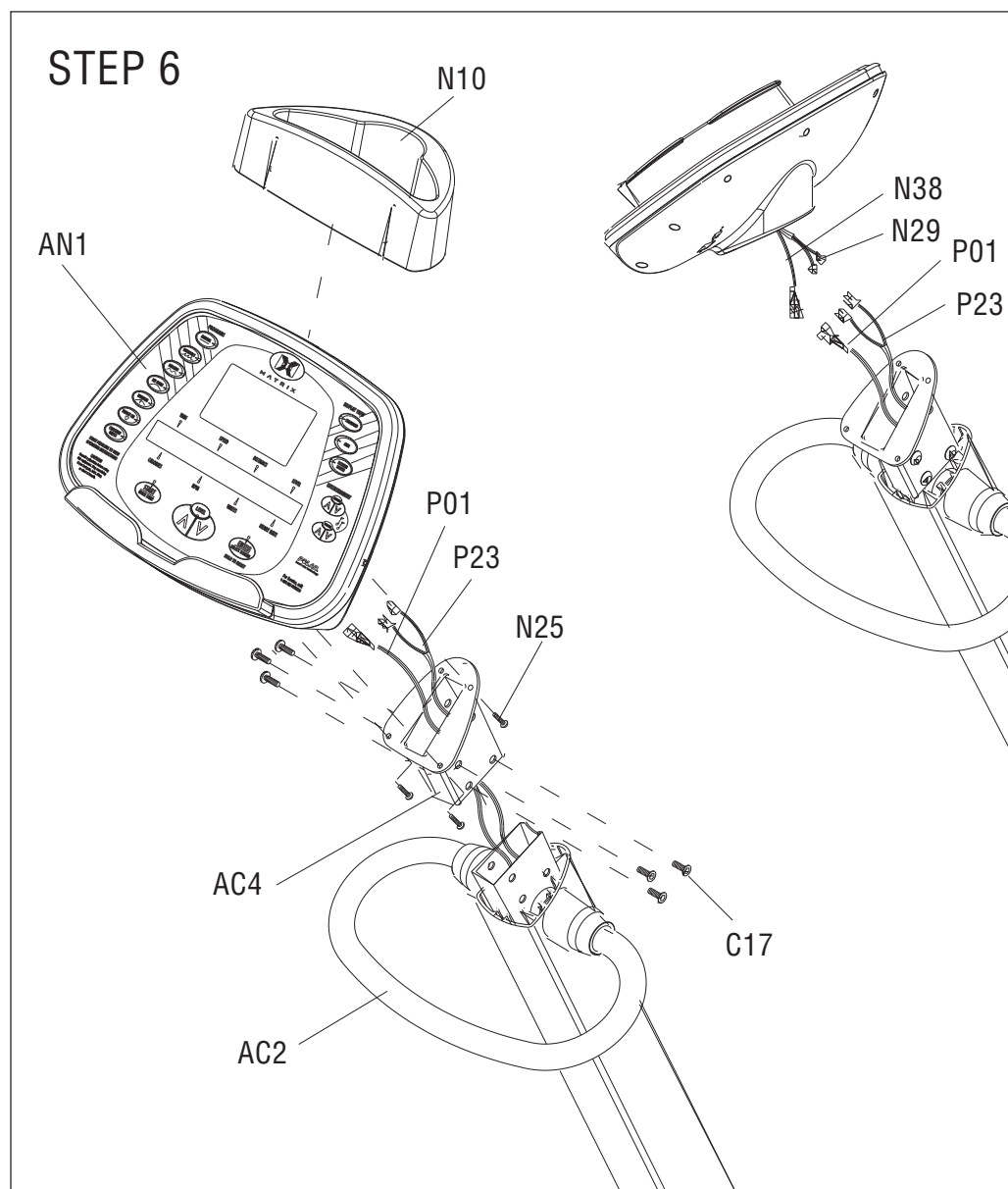
> recumbent cycle

MX-R5



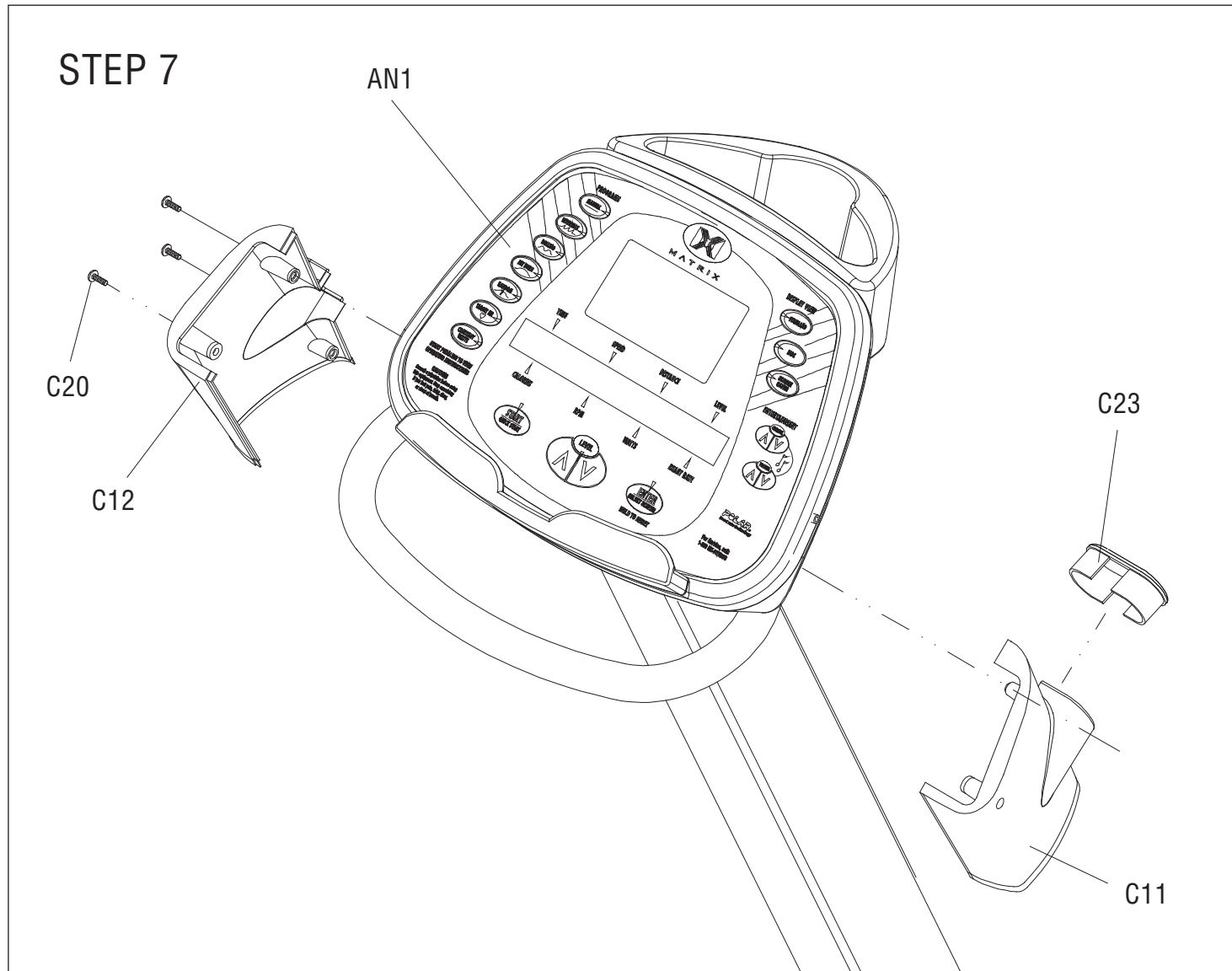
>recumbent cycle

MX-R5



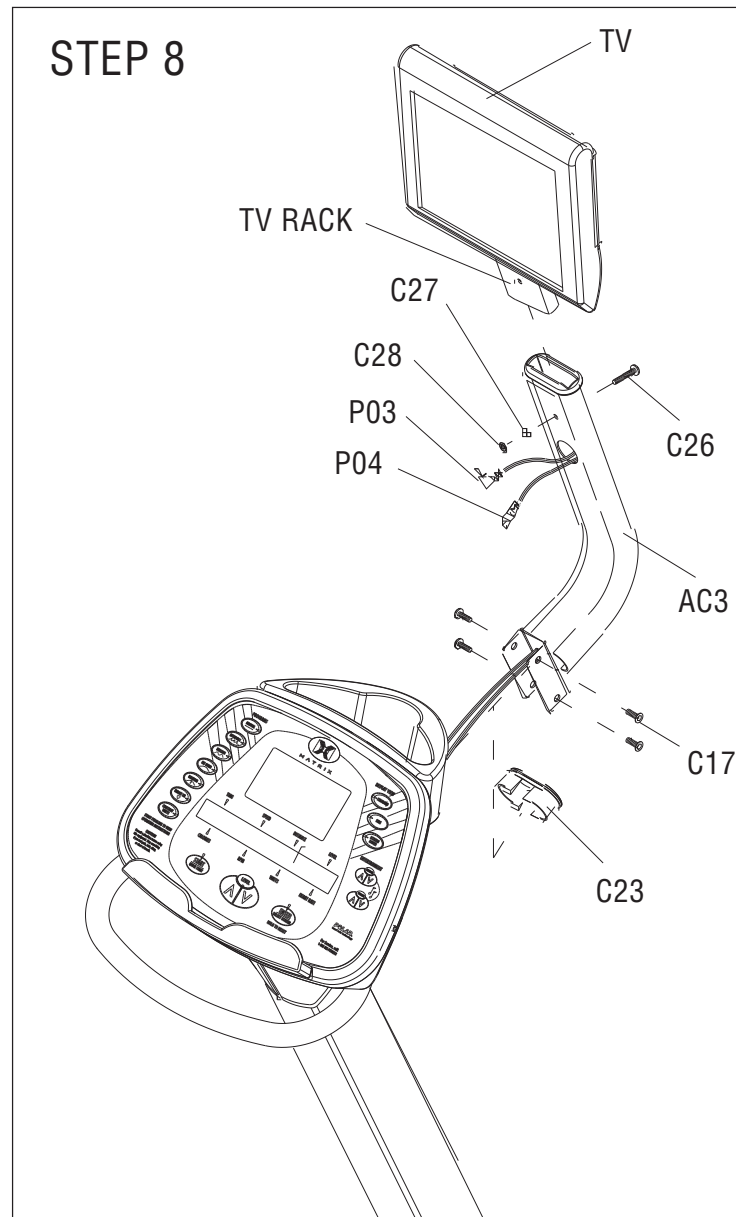
> recumbent cycle

MX-R5

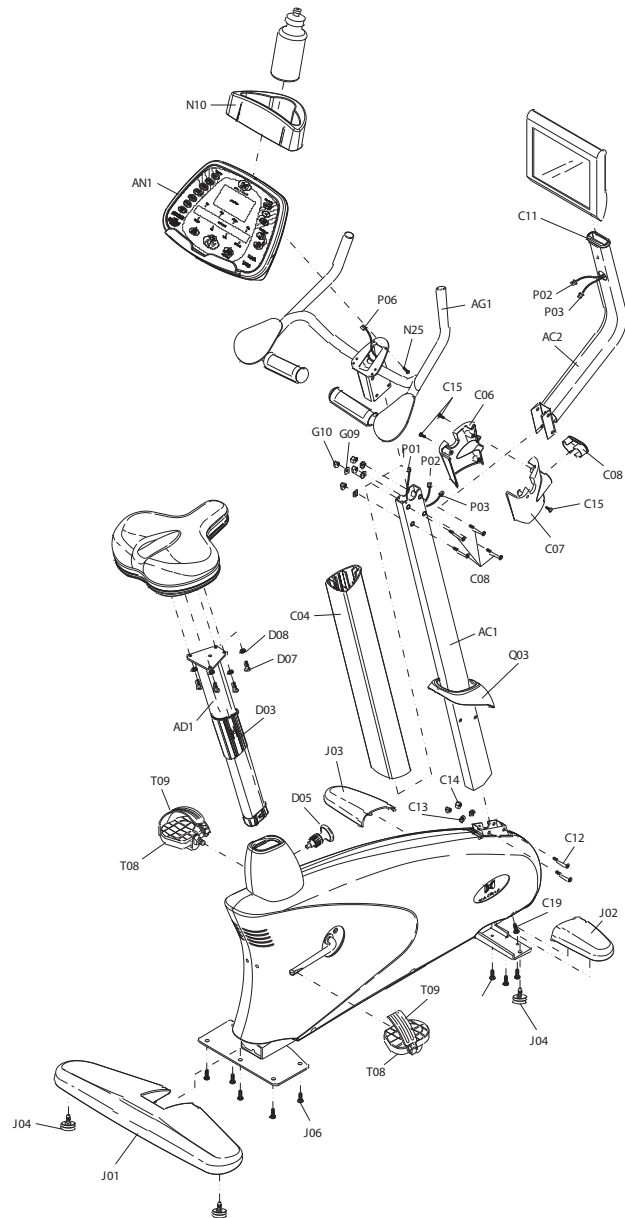


>recumbent cycle

MX-R5



MX-U5 Upright Bike Assembly Specifications & Exploded View



FASTENERS AND ASSEMBLY TOOLS

Reference	Sketch	Description	Quantity
J04		ADJUST PEDAL	4
J06		BUTTON HEAD BOLT (M10 x 20L)	5
J05		BUTTON HEAD BOLT (M8 x 20L)	6
C16		BUTTON HEAD BOLT (M8 x 50L)	1
D08		WASHER	4
D07		BUTTON HEAD BOLT (M8 x 20L)	4
C12		BUTTON HEAD BOLT (M8 x 50L)	2
C13		WASHER	2
C14		SCREW (M8)	2
G08		BUTTON HEAD BOLT (M8 x 50L)	4
G09		WASHER	4
G10		SCREW (M8)	4
C15		BUTTON HEAD BOLT (M4 x 45L)	4

6.5) PARTS LIST

> upright cycle

MX-U5

NO.	DESCRIPTION	SPECIFICATION
AG1	Handlebar Set	CB32 (w/HP) w/Texture
AG1	Handpulse Grip Set	CB32 (w/HP) w/o Texture
AN1	Console Set	CB32 (English-Metric)
AN1	Console Set	CB32 (Netherlands-Metric)
AN1	Console Set	CB32 (Germany-Metric)
AN1	Console Set	CB32 (Italy-Metric)
AN2	Hand Pulse Grip Set	CB32 (w/Texture)
AN2	Handpulse Grip Set	CB32 (w/o Texture)
AU1	Tension Wheel Set	CB32
Q01	Right Side Cover Set	CB32
Q02	Left Side Cover Set	CB32
R01	Drive Axel Set	CB32
R04	Fixing Bearing Housing Set	CB32
R05	Slide Bearing Housing Set	CB32
T01	Pedal Axle Set	CB32
AB1	Main Frame	CB32 (Anthracite)
AC1	Console Mast	CB32 (Anthracite)
AC2	TV Bracket (With Cables)	Matrix U5 (CB32)
AC5	TV-Support Bracket	Matrix U5 (CB32)
AD1	Seat Mast	CB32 (Halftone Printing)
AZ1	Hardware Kit	Include Hand Tools (Purple Round Sticker)
B23	C Clip	WUSN-4039
B24	Screw, Oval Head	M5x0.8Px12L (Bed)
B25	Nylon Nut	M5x0.8P
B28	C Clip	USN-4043
C04	Outer Tube Of Console	CB32-C04
C06	Console Lower Cover-Lh	ABS (CB32-C06B)
C07	Console Lower Cover-Rh	ABS (CB32-C07C)
C08	Console Cover	NYLON
C12	Screw, Round Hex Socket	M8x1.25Px50L (30L)
C14	Nylon Nut	M8x1.25P (Bed)
C15	Screw, Round Tapping	4x12L
C19	Screw, Round Hex Socket	M8x1.25Px60L
C22	Spring Washer	SW8 8.2x15.4x2t
D03	Seat Mast Bushing	Nylon
D04	Lower Bushing Of Seat Mast	Nylon (Iron-Tin Color)
D05	Seat Post Adjusting Pin Set	M16 (CB32-D05C)
D06	Seat Pad	Air Cushion (CB32-D06M)
D07	Nylon Nut	M8x1.25P (Chromate Treatment)
D08	Spring Washer	M8 (Zinc Plating)
D09	Screw, Plain Head	M4x0.7Px10L
D10	Bushing	POM (JS001-11)
D11	Screw, Oval Head	M6x1.0Px50L (10L)

NO.	DESCRIPTION	SPECIFICATION
D12	Nylon Nut	M6x1.0P (Chromate Treatment)
D15	Nylon Nut	M4x0.7P
G08	Screw, Inner Hex Socket	M8x1.25Px15L
J01	Rear Stabilizer	CB32
J02	Front Stabilizer-RH	CB32
J03	Front Stabilizer-LH	CB32
J04	Adjustable Foot Pad	
J05	Screw, Oval Hex Socket	M8x1.25Px20L (Bed)
J06	Screw, Oval Hex Socket	M10x1.5Px20L
L01	Mobile Wheel	NYLON+30%FIBER
L02	Screw, Oval Hex Socket	M8x1.25Px70L(12L)
L03	Flat Washer	8.2x18x1.4t (Bed)
L04	Nylon Nut	M8x1.25P (Bed)
N10	Watter Bottle Holder	ABS
N15	Overlay	MX U5/R5/E5 (U.S.A.)
N15	Overlay	MX U5/R5/E5 (Holland)
N15	Overlay	MX U5/R5/E5 (Germany)
N15	Overlay	MX U5/R5/E5 (Italy)
N20	2-in-1 Polar Receiver	POLAR 39021539.00 (RB59-P12A)
N21	Sensor Grip	CB32-N21F
N22	Heartbeat Sensor Plate	101.5x32 (SUS304) (w/Texture)
N22	Heartbeat Sensor Plate	101.5x32 (SUS304) (w/o Texture)
N23	End Cap, Hand Pulse Grip	Nylon
N26	Screw, Round Tapping	M3x0.5Px35L
N27	Hex Nut	M3x0.5P
P01	Console Cable	1050(XAP-07V-1+H6657R1-8+SMR-08V-B)
P02	E-Port Power Connecting Cable	350 (XAP-02V-1+SMP-02V-BC)
P03	E-Port TV Signal Cable	350(5C-2V+5C-2V)
P04	Connecting Cable Of Controller	600(3.96-5P+HL20P-03)
P05	Power Resistance	400W10_-200(3.96-4P White VH)
P06	Hand Pulse Cable	700 (H6657R1-2+110xF)
P11	Adapter	5C-2V (w/Nut)
P16	Ferrite Cord	FH0900B-2
P18	Earphone Extended Cable	185(3.5 3-D Earphones+ Microphone F*Base 3P)
P19	Power Transferred Cable	1200(XAP-02V-1+H6657R1-2)
P20	E-Port Control Board	w/PCB Board- DC Bracket & Adapter
P21	TV Signal Cable	1250(RG-6)X2 (w/Adapter x1)
P23	Console Mast Cable	900 (SMP-08V-BC+H6657P1-8)
P25	TV Power Cable	1250 (SMR-02V-B)x1
P37	End Protect Bushing	(KSS) EP-1113(BUY-OUT)
Q01	Right Side Cover	ABS
Q02	Left Side Cover	ABS

>upright cycle

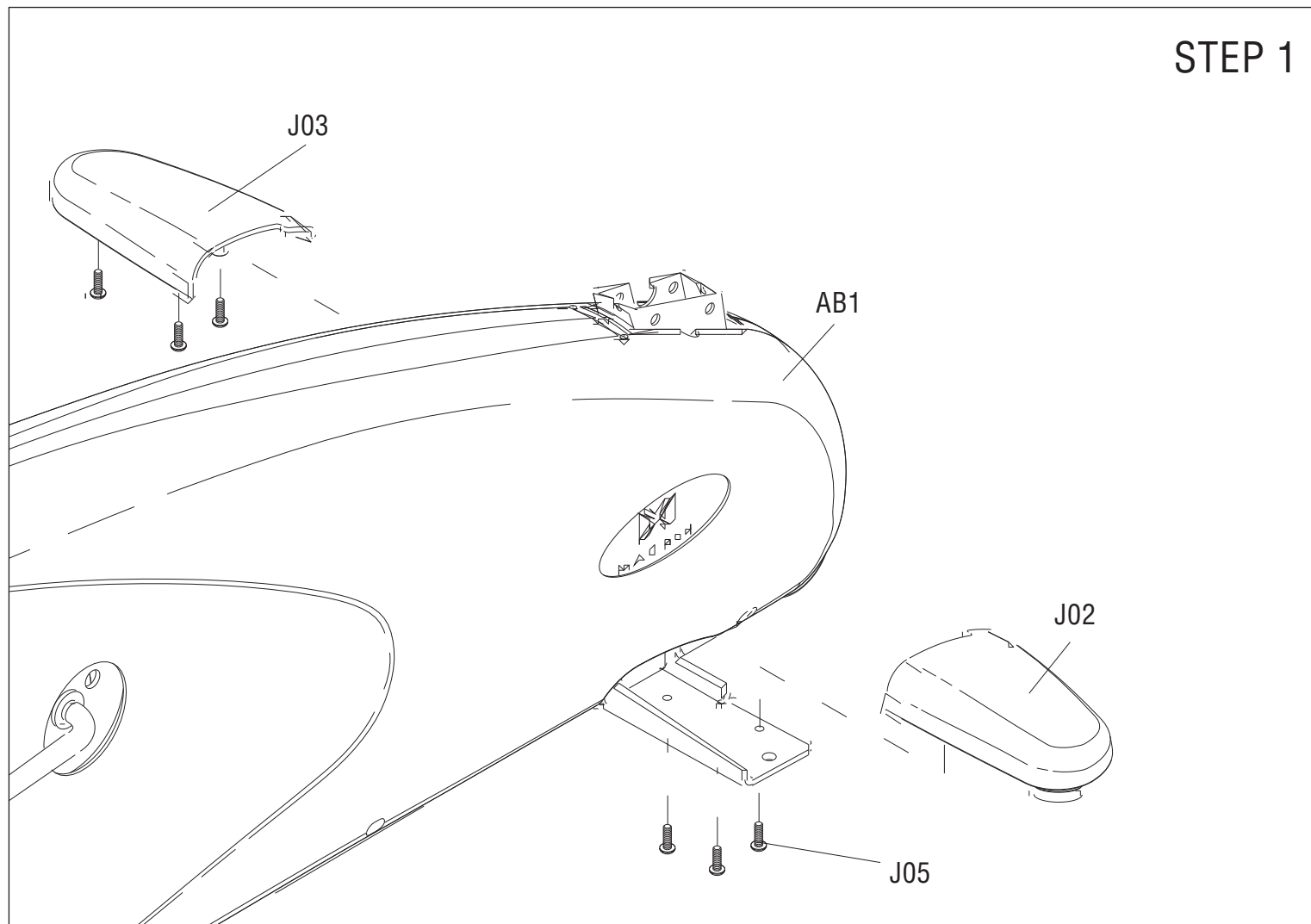
MX-U5

NO.	DESCRIPTION	SPECIFICATION
Q03	Console Mast Cover(Black)	PVC
Q04	Protecting Cover For Seat Mast	PVC
Q05	Crank Cover	PVC (Anthracite)
Q06	E-Port Fixing Plate	ABS
Q07	Screw, Oval Head	M4x0.7Px15L (Bed)
Q08	Screw, Oval Head	M3x0.5Px14L
Q09	Connecting Plate For Side Cover	SPC (Zinc Plating)
R06	Tight Nut	AN05(M25x1.5P) (Bed)
R07	2-End Round Key	6x6x15L
R08	Ball Bearing	6202ZZ(BR6202ZZ)
R09	Ball Bearing	6204ZZ
R10	One-Way Bearing	FC-25(BHF-2520)
R11	C Clip-Internal	R-47
R12	C Clip-Internal	R-35
R13	C Clip-External	S-20
R14	C Clip-External	S-30
R15	Screw, Round Hex Socket	M5x0.8Px12L
R16	Flat Washer	_5.2x_13x1.5t
R17	Screw, Oval Hex Socket	M6x1.0Px12L
R18	Flat Washer	_6.2x_20x2.0t(HRC47-52)
R19	Ploy V Belt	450-J8(Carlisle)
R20	Ploy V Belt	390-J6(Carlisle)
S01	Generator (CB32-KT/RB50-KT)TW Line	_190 CE CB/RB MX/600 Series
S01	Generator-ID Line	_190 CE CB/RB MX/600 Series
S01	Generator (JM07-AM1A) USA Line	_190 NO CE MX/600 Series (JM07-AMIA)
S02	Eye Hook Screw	1/4"-20UNCx70L Eye Hole 10
S03	Flat Washer	_10.2x_15x1.5t
S04	Nut, Hex Head	3/8"-26UNF
S05	Hook Cover For Eye Bolt	1.6t SPC (Bed)(CB32-S05D)
S06	Nylon Nut	1/4"-20UNC (Bed)
S07	Flat Washer	_1/4"x_15x1t
S08	Control Board (JE07002)	U5-R5-E5-H002(JE07002)
S09	Hex Nut	3/8"-26UNCx4H
S10	Screw, Round Hex Socket	M5x0.8Px12L
S11	Flat Washer	_5.3x_10x1.0t
T07	Ball Bearing	6205ZZ(BR6205ZZ)
T08	Pedal & Pedal Strap	EX-13 1/2 BR-"Matrix" logo
T09	Pedal Strap	PU(CB32-T09B)
T13	Right Crank Nut	SS41(Zinc Plating)
T15	Front Spacer	Powder Metallurgy (CB32-T15I)
T17	Flat Washer	_32x_25.3x1.0t
T18	Spacer Tight Nut	SS41(Zinc Plating)
T19	Large Screw, Oval Head	M4x0.7Px8L

NO.	DESCRIPTION	SPECIFICATION
U04	Pulling Adjustable Plate	2t SPC(SPA09509)
U05	Ball Bearing	(BR6006ZZ)
U06	C Clip Internal	R-55
U07	Ball Bearing	6204ZZ
U08	C Clip-External	S-09
U09	Screw, Hex Head	M8x1.25Px25L
U10	Hex Nut	M8 (Zinc Plating)
U11	Flexible Spring	_16.0* 2.0*100.0L*25.5 (S7)
U12	Screw, Round Hex Socket	M5x0.8Px10L (Bed)
V04	Decal	Matrix (Except Italy)(CB32-V04B)
X01	Carton	
X02	Styrofoam Packaging	CB32
Z02	L-Key Hex Wrench	M5
Z03	L-Key Hex Wrench	M6
Z04	L-Key Hex Wrench	M8
Z05	Open End Wrench	#13
Z06	Screwdriver, Cross Type	4.5*50
Z07	Open End Wrench	#15#17x325L
	Assembly Guide	E5/R5/U5/T4/T5
	Assembly Guide(Console)	(ID Line Use Only)
	Owner's Manual(Console)	Fairy Book (for ID Line/Matrix-CV All)

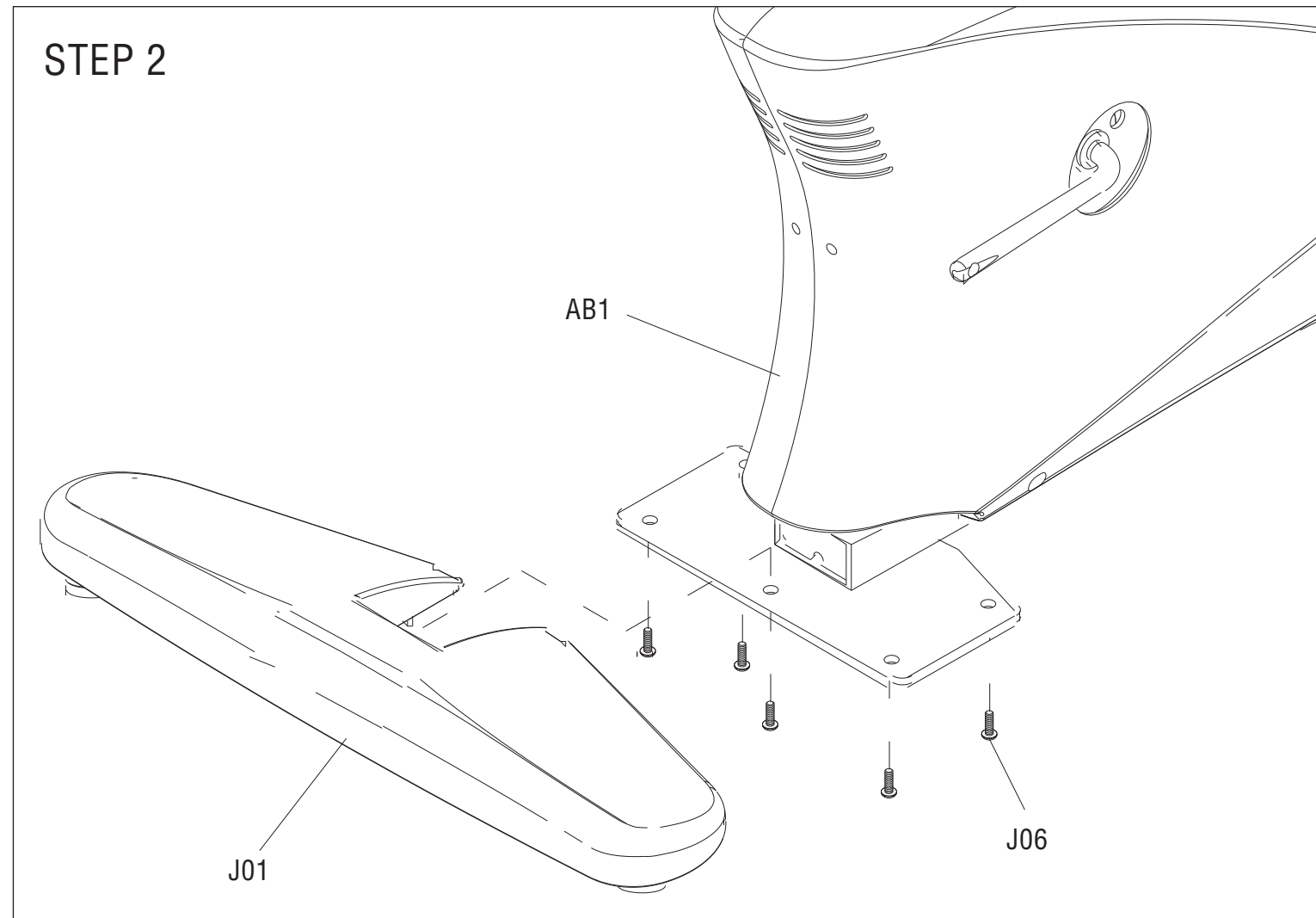
> upright cycle

MX-U5



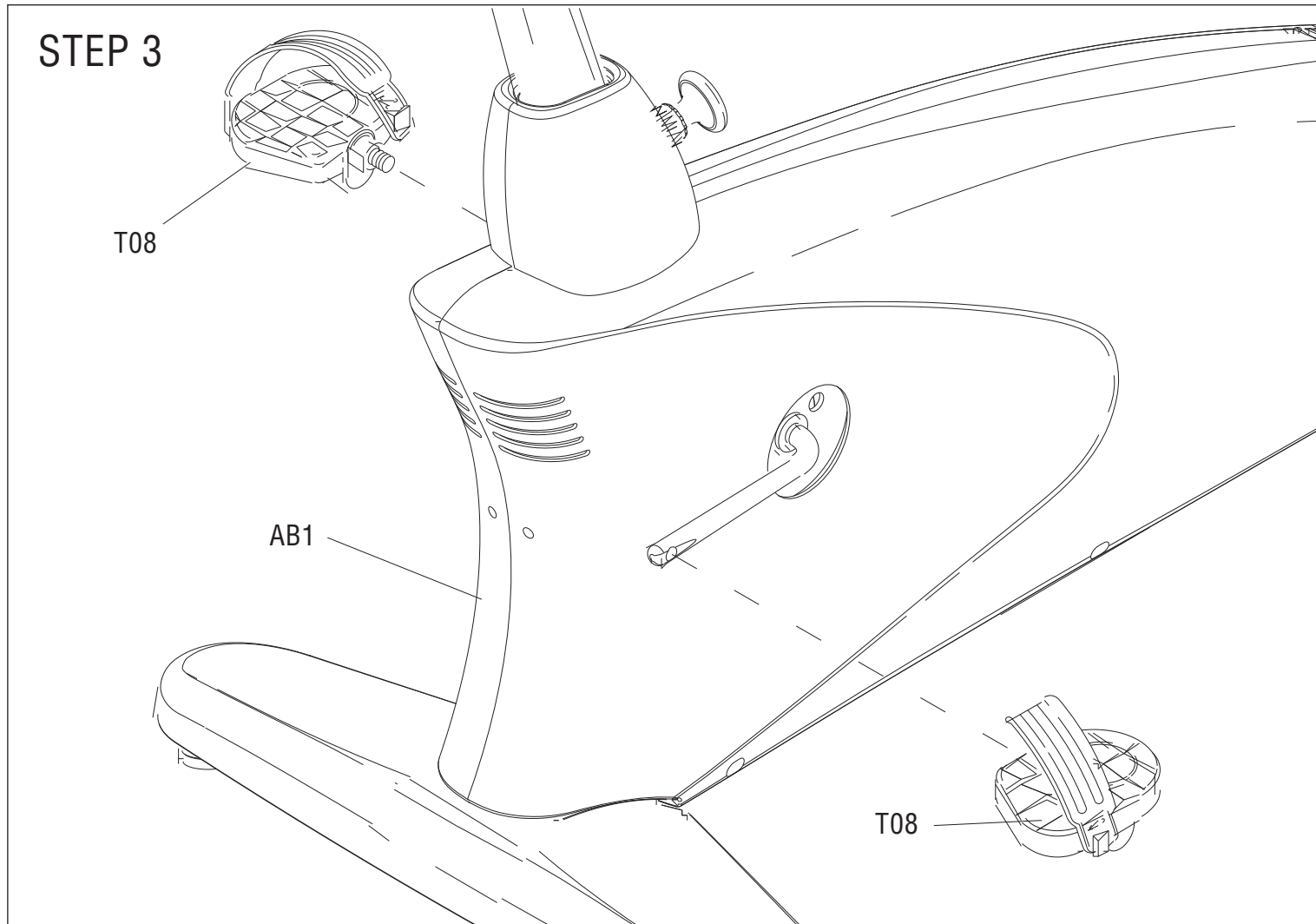
>upright cycle

MX-U5



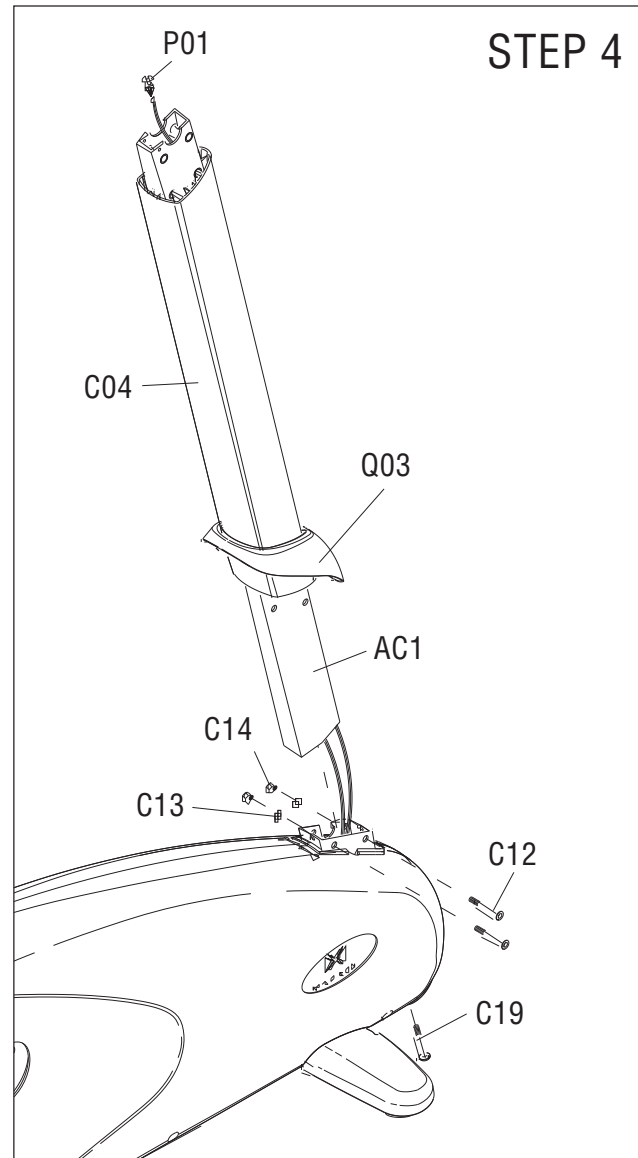
> upright cycle

MX-U5



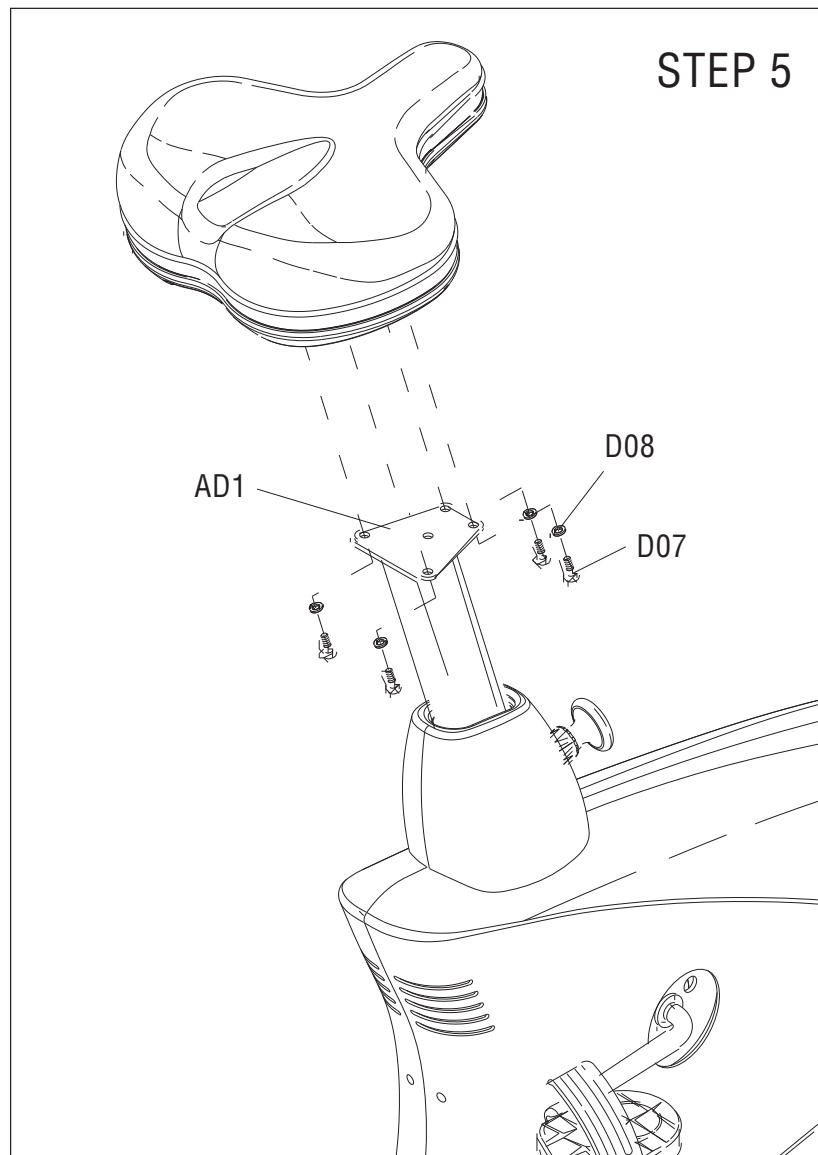
>upright cycle

MX-U5



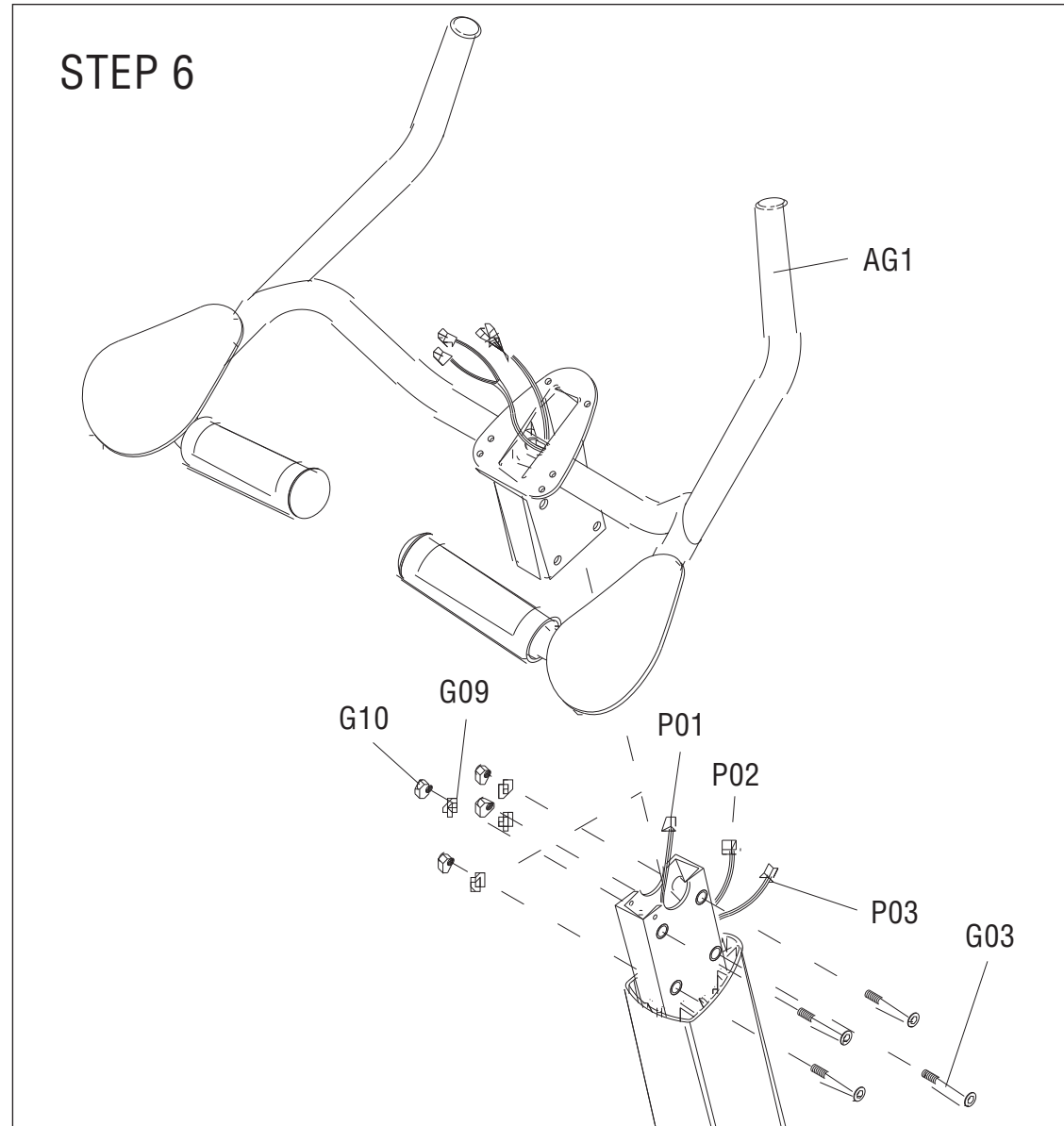
> upright cycle

MX-U5



>upright cycle

MX-U5



> upright cycle

MX-U5

